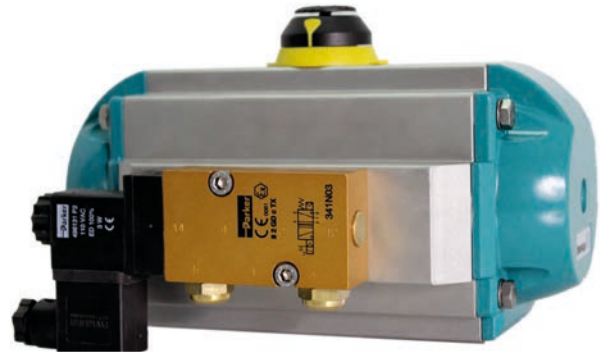


## Descrizione

331N(3/2 vie), 341N(5/2 vie) Elettrovalvola (valvola a cassetto) IP65, corpo in alluminio

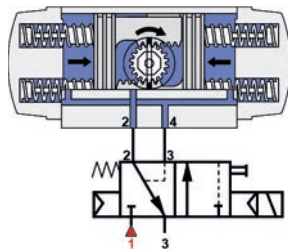
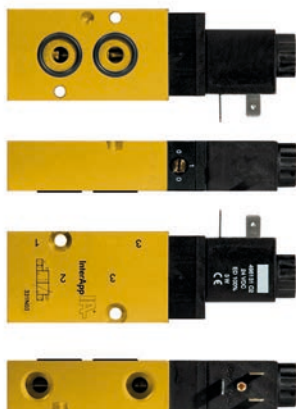
## Caratteristiche

	331N03 (3/2)	331N04 (3/2)
	341N03 (5/2)	341N04 (5/2)
• Diametro	7mm	12mm
• Portata nominale	1250 l/min	3000 l/min
• Attacchi	NAMUR	
• Pressione differenziale	min. 1,5 bar, max. 10 bar	
• Campo temperatura	-10°C ÷ 50°C	

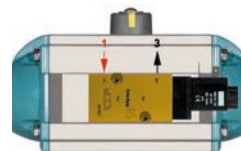


## Dimensioni

### 331N (3/2)



### IA050S - IA250S, IA750S



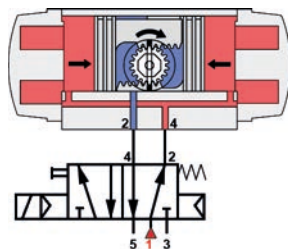
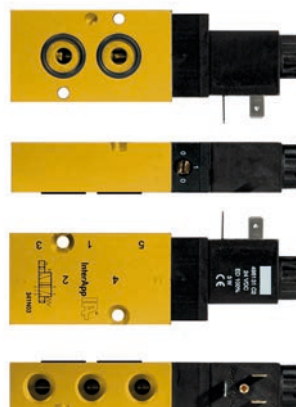
### IA300S - IA700S IA800S, IA1000S



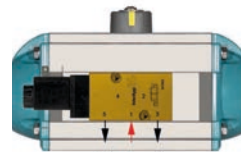
IA motion	Elettrovalvola IP65	[Watt]	L	L1	B	H	1+3	[kg]
IA050S-IA600S	<b>331 N 03, 496131-**. **</b>	3	123,7	88,7	40	22	G ¼"	0,30
IA650S-IA1000S	<b>331 N 04, 496131-**. **</b>	3	169,0	112,0	60	30	G ½"	0,72

\*\* 12/=, 24/=, 48/=, 24/50, 110/50, 230/50

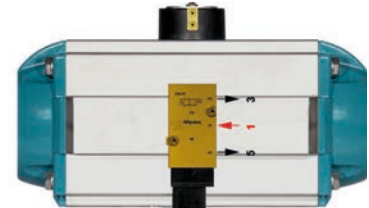
### 341N (5/2)



### IA050D - IA250D, IA750D



### IA300D - IA700D IA800D, IA1000D



IA motion	Elettrovalvola IP65	[Watt]	L	L1	B	H	1+3+5	[kg]
IA050D-IA600D	<b>341 N 03, 496131-**. **</b>	3	123,7	88,7	40	22	G ¼"	0,30
IA650D-IA1000D	<b>341 N 04, 496131-**. **</b>	3	169,0	112,0	60	30	G ½"	0,70

\*\* 12/=, 24/=, 48/=, 24/50, 110/50, 230/50



## Descrizione

5/2 vie (3/2 vie) Elettrovalvola (valvola a cassetto) IP65, corpo in alluminio anodizzato

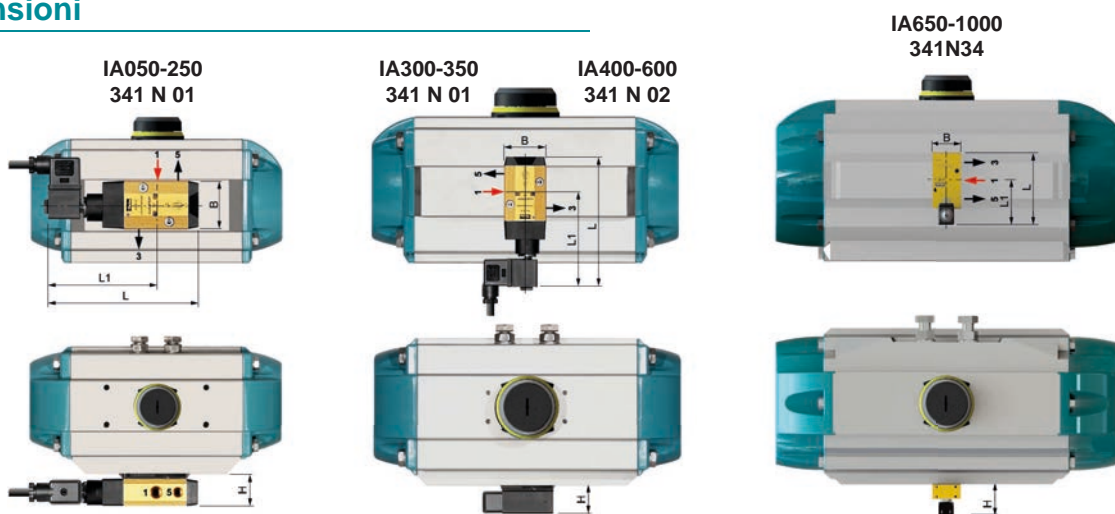
## Caratteristiche

	341N01	341N02	341N34
• Diametro	4mm	8mm	12mm
• Portata nominale	600 l/min	1400 l/min	3000 l/min
• Attacchi		NAMUR	
• Pressione differenziale	min. 2 bar, max. 10 bar		
• Campo temperatura	-25°C ÷ 50°C		



341 N -> EEx m II T5 (Ex II 2 G/D)

## Dimensioni



IA motion		Elettrovalvola IP65	AC / DC	[Watt]	L	L1	B	H	1	3 + 5
IA050 - IA350		341 N 01, 482606-230/50	230V 50Hz	2W	146,7	106,2	46	31,6	G 1/4"	G 1/8"
		341 N 01, 482606-24V/=	24V =	2,5W						
IA400 - IA600		341 N 02, 482606-230/50	230V 50Hz	2W	160,6	115,1	55	40,2	G 1/4"	G 1/4"
		341 N 02, 482606-24V/=	24V =	2,5W						
IA650 - IA1000		341 N 34, 495905-230/50	230V 50Hz	8W	144	87	60	68	G 1/2"	G 1/2"
		341 N 34, 495905-24V/=	24V =	8W						

Altre esecuzioni e tipologie (a richiesta) (doppio solenoide, corpo INOX) (anche secondo specifiche cliente)

## Passaggio dalla funzione 5/2 alla funzione 3/2:

Il passaggio dalla funzione 5/2 alla funzione 3/2 (o dalla 3/2 alla 5/2) si esegue operando una rotazione di 180° della piastra intermedia.

