



AVK BALL CHECK VALVE, FLANGED, PN10

53/42-001

Stainless steel AISI 316, DN80, 100 and 150

AVK ball check valves are self-cleaning and with full bore. The ball rotates during operation eliminating the risk of impurities getting stuck on the ball. The full and smooth bore ensures full flow with low pressure loss and eliminates the risk of deposits at the bottom. AVK ball check valves are available with flanges and internal threads. They are delivered with NBR lined ball as standard and optionally with ball of polyurethane available in different weights.

Product description:

Ball check valve in stainless steel with flanges for wastewater to max. 70° C

Design standards:

- EN 12050-4
- Face-to-face dimension according to EN 558 Table 2 Basic Series 48
- Flange drilling to EN1092, PN10/16

Features:

- Self-cleaning construction, where the ball rotates during operation eliminating the risk of impurities getting stuck on the ball
- Full bore ensures low pressure loss and minimum back pressure
- Smooth bore eliminates the risk of deposits at the bottom
- NBR lined ball of aluminium in DN80 and DN100 and of cast iron in DN150. The rubber hardness is optimised to prevent the ball from getting stuck in the seat
- Compact design and low weight
- Body, cover, bolts and nuts of stainless steel



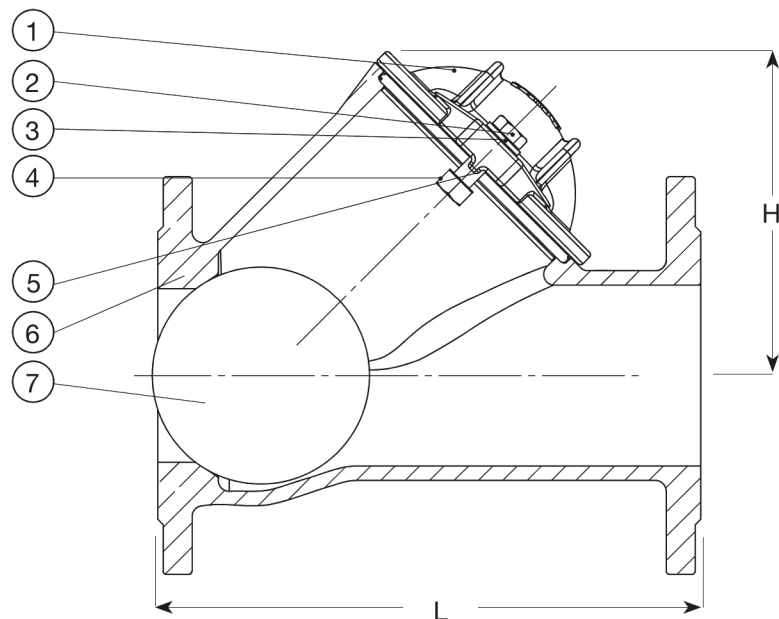
Expect ... **AVK**

The designs, materials and specifications shown are subject to change without notice due to the continuous development of our product range.

AVK BALL CHECK VALVE, FLANGED, PN10

53/42-001

Stainless steel AISI 316, DN80, 100 and 150



Component list:

1. Cover	Stainless steel AISI 316	5. O-ring	NBR rubber
2. Bolt	Stainless steel A2	6. Body	Stainless steel AISI 316
3. Washer	Stainless steel A2	7. Ball	NBR rubber line on a metal core
4. Nut	Stainless steel A4, Delta Seal		

Components may be substituted with equivalent or higher class materials without prior notification.

Reference nos. and dimensions:

AVK ref. no.	DN mm	Product PN Class	Flange drilling	L mm	H mm	Theoretical weight/kg
53-080-42-1090	80	PN10	PN10/16	260	148	12
53-100-42-1090	100	PN10	PN10/16	300	182	16
53-150-42-1090	150	PN10	PN10/16	400	251	31