

Reliable valves for HVAC applications

HVAC processes –
Expertise in industrial applications



The right selection for your HVAC processes

Process	Media	Pressure range	Temperature range	Abrasion	Corrosion	Valve
Heating - Furnace						
	Air	Ambient	20 - 80°C	Low	Low	Damper valve*
	Gas	1 - 2 bar	20 - 80°C	Low	Low	Ball valves
Heating - Boiler						
	Treated water	1 - 4 bar	65 - 120°C	Low	Low	Ball and globe valves, check valves
	Steam	1 - 4 bar	100 - 400°C	Low	Moderate	Elara carbon steel body, stainless disc and metal seat, check valves, check valves
	Tap water	1 - 2 bar	20 - 60°C	Low	Moderate	Aquaria plus with stainless disc and EPDM HT liner, check valves
	Air	Ambient	20 - 60°C	Low	Low	Damper valve*
Ventilation						
	Air	Ambient	-20 - 40°C	Low	Low	Damper valve*
Air conditioning						
	Air	Ambient	-20 - 40°C	Low	Low	Damper valve*
	Water	Ambient	20 - 60°C	Low	Low	Aquaria plus with ductile iron disc and EPDM HT liner, check valves

* Damper valve (out of InterApp scope)

2

1

Reliability

Our butterfly valves convince with an optimised and reliable design. They ensure long-lasting and trouble-free operation.

2

Availability

Readily available semi-finished components and a flexible production enable short delivery times.

3

Product variety

The Desponia® product range is available to cover applications where the Aquaria plus can no longer be used.

4

Complete package

With our broad range of products and expertise, we are your reliable full-stop partner in the HVAC sector.

Aquaria plus

Elastomer-lined butterfly valve



Body construction	Wafer, Lug
Nominal diameter	DN 25–300
Max. working pressure	Up to 16 bar
Flange connection	PN6, PN10, PN16, ANSI cl. 150 (Wafer) PN10, PN16, ANSI cl. 150 (Lug)
Temperature range	–20°C to 130°C
Body material	Ductile iron
Disc material	Ductile iron, Stainless steel
Liner material	EPDM HT

Neptunia

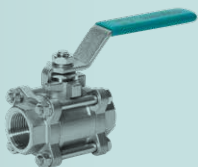
DUO check valve



Body construction	Wafer
Nominal diameter	DN 50–600
Max. working pressure	Up to 16 bar
Flange connection	PN10, PN16, other ratings on request
Temperature range	–10°C to 200°C
Body material	Ductile iron, Stainless steel, Aluminium bronze
Disc material	Ductile iron, Stainless steel, Aluminium bronze
Seal material	NBR, EPDM, FPM

3

Other products



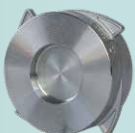
Stainless steel ball valves

2- way valves in stainless steel, available with 2- or 3-piece body.



Double eccentric butterfly valve Elara

With carbon steel or stainless steel body, designed for heavy duty applications up to 50 bar.



Check valves

Stainless steel check valves, Swing and Disco, are available in various executions.



Actuators and accessories

Actuators and a large range of accessories are available to complete the system.

We are there for you. Anywhere, anytime.

As an international company with extensive product and project expertise, we support you with our sales partners and our technical support team in all parts of the world.

