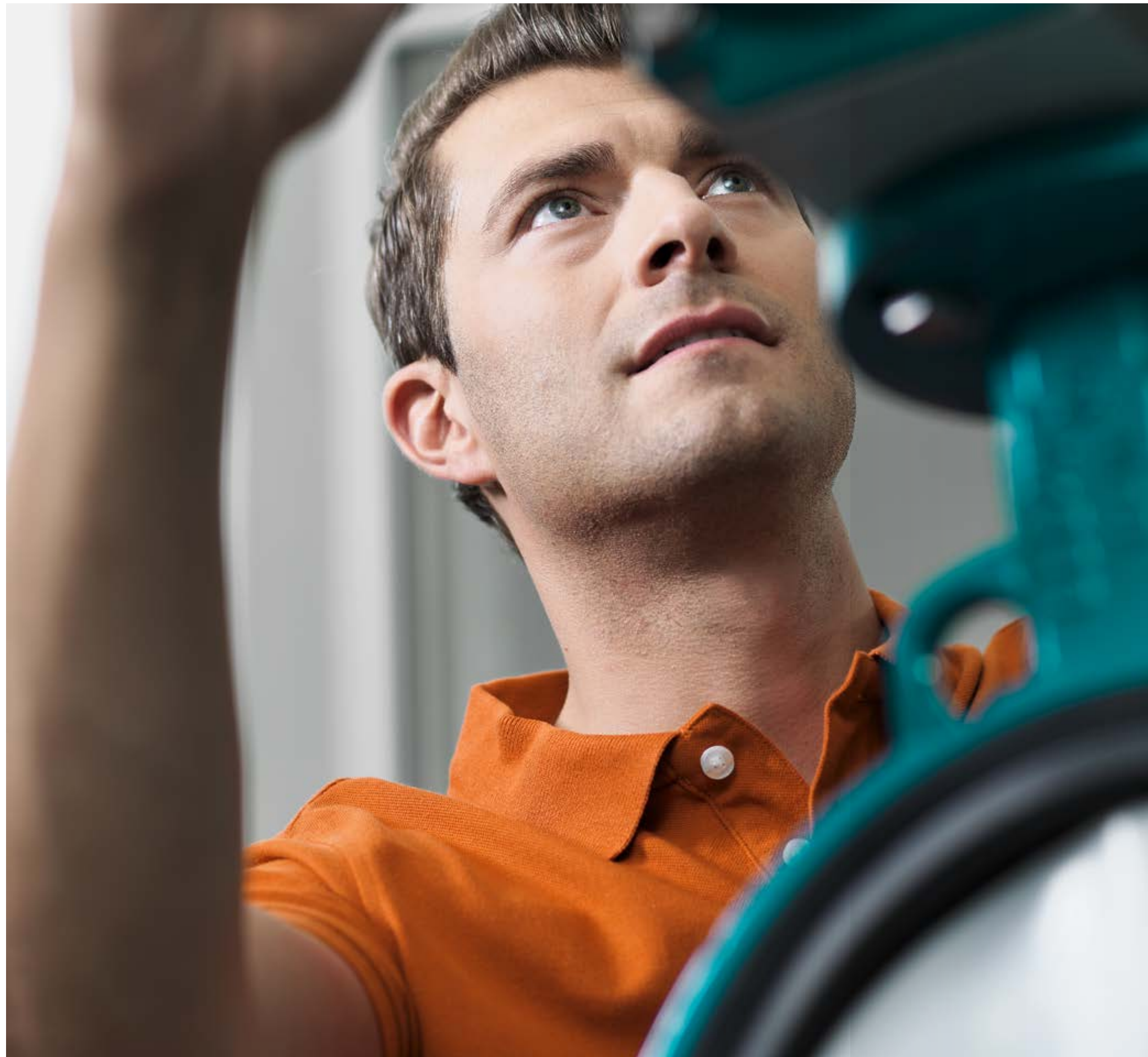


Maximum plant availability for maximum profitability

Mining –
Expertise in demanding environments





Our expertise to your benefit

As a customer-focused production and sales company, we offer reliable and proven product solutions for hydrometallurgical, electro- and pyrometallurgical processes in the mining sector. Customers around the world rely on our proven butterfly valves to ensure maximum plant availability and maximise profitability in the most aggressive and demanding mineral processes.

Whether for new constructions or maintenance requirements, our readily available valves can be configured to your specific applications.

Consistent Reliability



Bianca PTFE-lined butterfly valve

Centric butterfly valve for mining and metallurgical refining applications using the most aggressive chemicals

Body construction	Wafer, Lug, U-Section
Nominal diameter	DN 32–900 (1¼"–36")
Max. working pressure	Up to 16 bar (232 psi)
Flange connection	PN10, PN16, ANSI cl. 150, AS 2129 tab D and E, JIS B2220
Temperature range	–20°C to 200°C (–4°F to 392°F)
Body material	Ductile iron, stainless steel
Disc-shaft (one piece)	Stainless steel, Duplex, Hastelloy, PFA and PFA antistatic overmoulded
Liner material	PTFE, PTFE antistatic, Ultraflon®, Ultralene™
Special executions	Execution for explosive atmospheres

Expect more

1

Reliability

The high liner collar, the PFA disc overmoulding on the shaft and the life-preloaded safety shaft sealing guarantee excellent shaft sealing, even for greater operating cycles at high temperatures.

2

Performance

The combination of the chambered PTFE liner and the mechanically locked PFA-overmoulded disc ensures low friction and guarantees extended life of operation.

4

Product variety

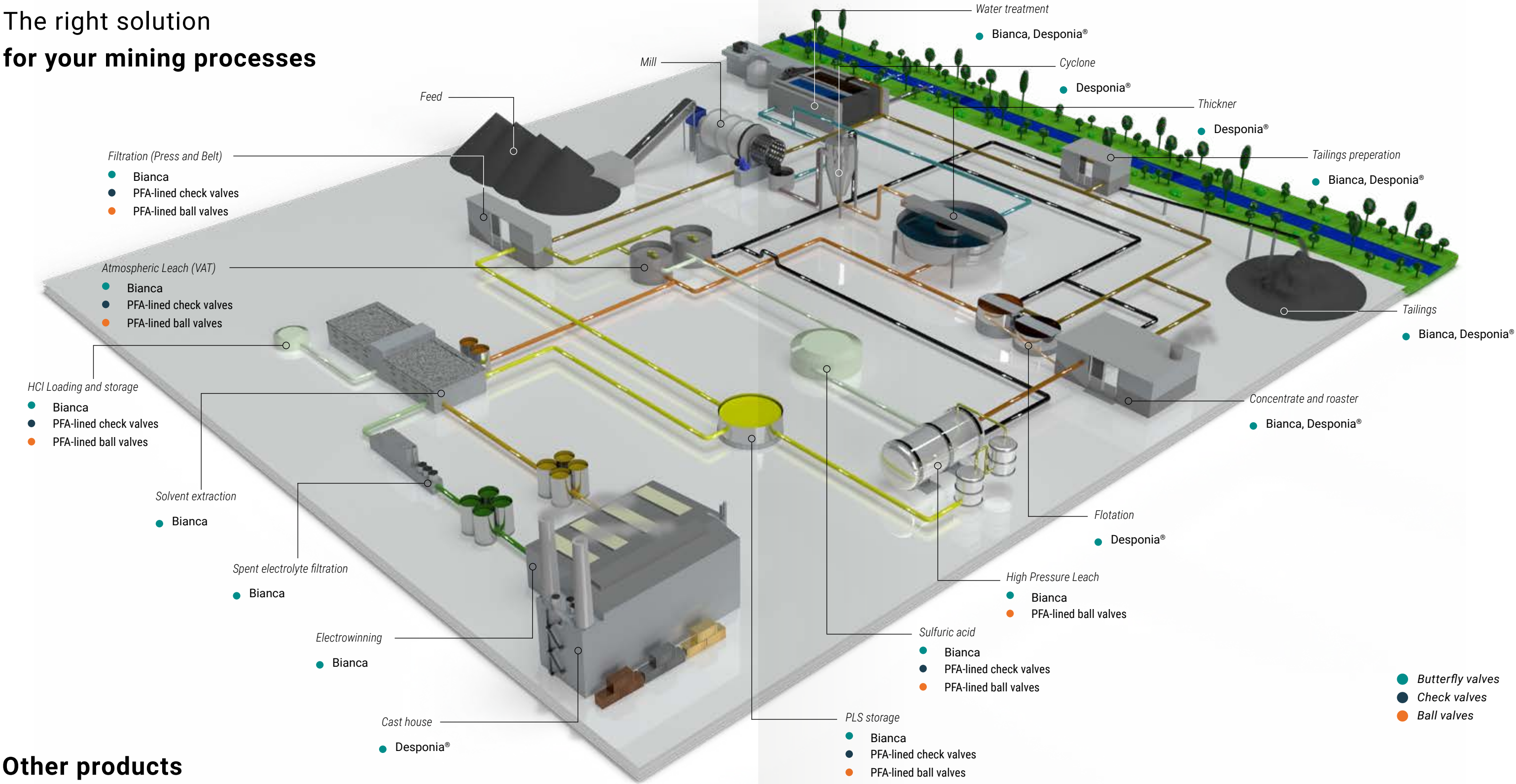
The Bianca range from DN 32–900 covers the entire mining process where high corrosion resistance is required. This with only one butterfly valve type!

3

Availability

The high availability of semi-finished components enables short delivery times, even for large sizes up to DN 900.

The right solution for your mining processes



Other products



Ball valves

A large product range of 2- and 3-way PFA lined valves. Stainless steel body, grease-free execution.



STCV

PFA-lined swing check valve, Sizes 6"-12". Cast steel body, grease-free execution.



Desponia®

Elastomer-lined butterfly valve, Sizes 1"-64". Ductile iron body, Abrasion resistant discs and liners.



Neptunia

Dual plate check valve, Sizes 2"-24", Stainless steel body and grease-free execution.



Saturnia

Metal seated valve to regulate the flow of fumes and air up to 1112°F. Used in smelters as a damper.



Actuators

Our valves can be operated manually or automatically by pneumatic actuators as on/off- or regulating services.

The mining industry around the world relies on InterApp valves

Lithium Mines

in South America

Copper Mines

in Chile, Peru, Poland, Spain, South Africa, Namibia, Zambia, DRC and Australia

Nickel Mine

in Cuba

Nickel Cobalt Mine

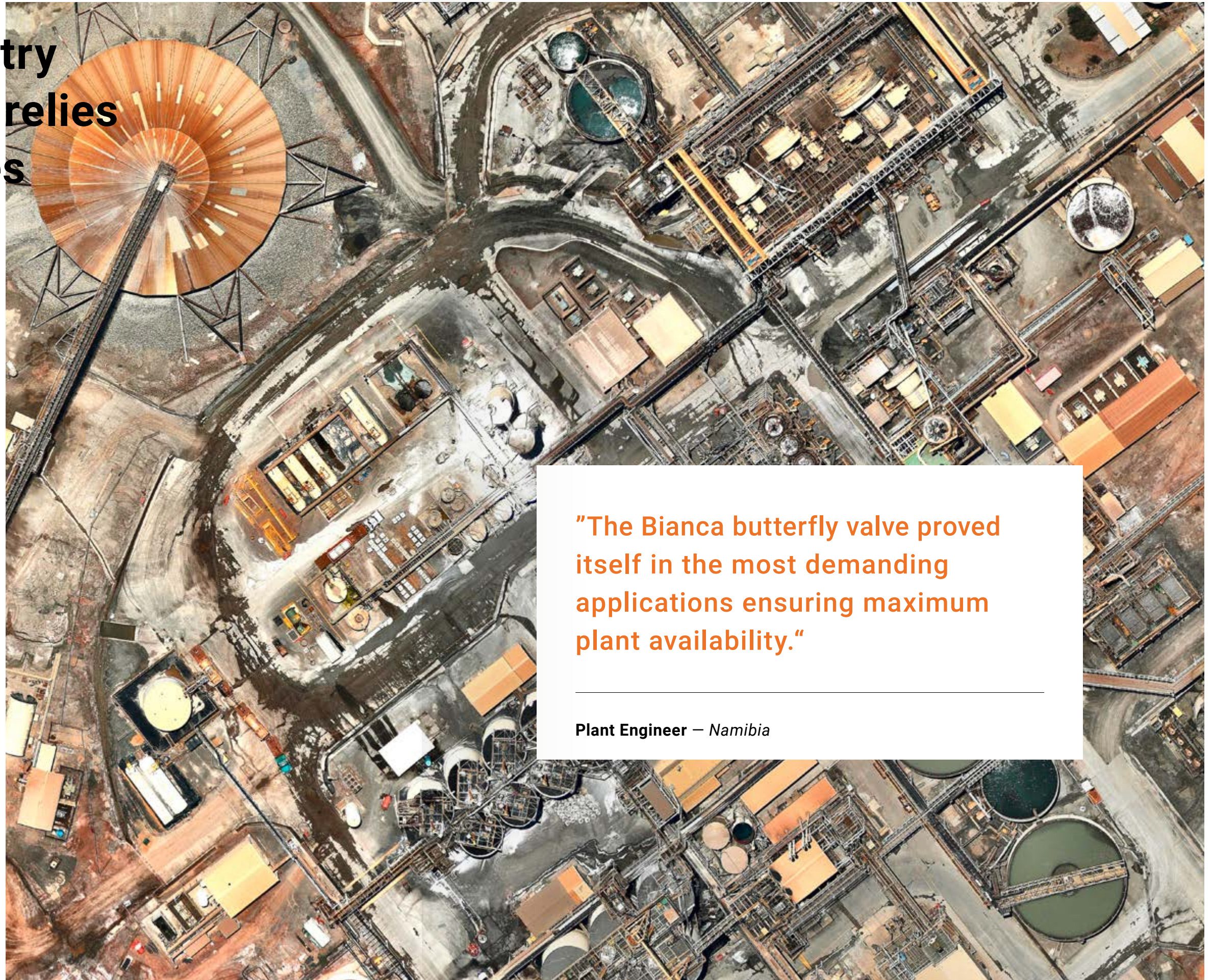
in Australia

Uranium Mines

in South Africa, Namibia and Australia

Platinum Mines

in South Africa



"The Bianca butterfly valve proved itself in the most demanding applications ensuring maximum plant availability."

Plant Engineer — Namibia

Globally local



As an international company with extensive product and project expertise, we support you with our sales partners and our technical support team in all parts of the world. We are aware that supply does not end with delivery, therefore we offer an after sales service that includes, product support as well as training in installation and maintenance.

We are there for you.
Anywhere, anytime.

Facts & Figures

- / 1969 founded in Switzerland
- / 2 manufacturiung sites in Switzerland and Spain
- / Over 20 sales and distribution companies and export sales partners
- / A dedicated member of the AVK Group since 2010



*InterApp AG reserves the right to change
or remove products or services from its range
at any time and without prior notification
or obligation. InterApp AG does not assume
any liability for consequences resulting
from the use of this document. There is no
guarantee that the information provided
here is complete, accurate or up to date.*

© 2025 InterApp AG. All rights reserved.

*The duplication of this document or a part
thereof is only permitted with prior
written consent from the owner of the
copyrighted material.*

info@ch.interapp.net
www.interapp.net

