

# Valves for the oil and gas industry

Oil and gas –  
Maximum plant availability





# Uncompromising quality



## Bianca PTFE-lined butterfly valve

Centric butterfly valve for handling corrosive media used in upstream and downstream processes in the oil and gas industry, with a pressure rating of up to 16 bar.

Body construction	Lug, Wafer, U-Section
Nominal diameter	DN 32 – 900 (1 ¼" – 36")
Max. working pressure	Up to 16 bar
Flange connection	PN10, PN16, ANSI cl. 150, JIS 10K
Temperature range	–20°C to 200°C
Body material	Ductile iron, Stainless steel
Disc-shaft material (one piece)	Stainless steel, PFA overmoulded
Liner material	PTFE, Ultraflon™ with MVQ or FPM back liner
Special executions	Execution for explosive atmospheres, fugitive emission

## Desponia® and Desponia® plus Elastomer-lined butterfly valve

Centric butterfly valve for general applications in the oil and gas industry, with a pressure rating of up to 20 bar.

Body construction	Wafer, Lug, U-Section
Nominal diameter	DN 25 – 1600 (1" – 64")
Max. working pressure	Up to 20 bar
Flange connection	PN6, PN10, PN16, ANSI cl. 150, JIS 5K, JIS 10K, JIS 16K
Temperature range	–20°C to 200°C
Body material	Ductile iron, Stainless steel
Disc material	Stainless steel, Aluminum bronze , Stainless steel with Ultralene coating® (UHMWPE)
Liner material	EPDM, NBR, FPM, Flucast FN and Flucast FP
Special executions	Execution for explosive atmospheres, fugitive emission

## Elara Double eccentric butterfly valve

Double eccentric butterfly valve for heavy-duty applications, with a pressure rating of up to 50 bar.

Body construction	Wafer, Lug
Nominal diameter	DN 50– 600 (2"–24")
Max. working pressure	Up to 50 bar
Flange connection	PN10, PN16, PN25, PN40, ANSI cl. 150/300
Temperature range	-50°C to 400°C
Body material	Carbon steel, Stainless steel
Disc material	Stainless steel
Seat material	MPTFE, Metal, Fire Safe
Special executions	Execution for explosive atmospheres, Fire safe

# The right selection for your oil and gas processes

Process	Media	Pressure range	Temperature range	Abrasion	Corrosion	Valve
Drilling operations						
	Drilling mud	10-20 bar	10-50°C	High	Moderate	Desponia® (plus) with aluminum bronze disc and FN liner
	Cement slurry	10-20 bar	10-30°C	High	Moderate	Desponia® (plus) with Ultralene coating™ disc and FP liner
	Produced water	10-20 bar	10-50°C	Moderate	Moderate	Desponia® (plus) with aluminum bronze disc and FN liner
Production facilities						
	Raw gas, sweet gas	10-100 bar	10-50°C	Moderate	High	Globe, gate, check, ball <sup>1)</sup> valves and triple offset butterfly valve with Trim 5/8/12/16, metal and soft seated
	Oil/water	5-20 bar	10-50°C	Moderate	High	Desponia® (plus) with stainless steel disc and NBR or FPM liner
	Hydrogen Sulfide (H <sub>2</sub> S)	5-16 bar	20-60°C	Low	High	Bianca with PFA overmoulded disc and PTFE liner
Injection systems						
	Treated water	10-20 bar	10-40°C	Low	Moderate	Desponia® (plus) with stainless steel disc and EPDM liner
	Injection gas	10-50 bar	10-50°C	Low	High	Globe, gate, check, ball <sup>1)</sup> valves and triple offset butterfly valve with Trim 5/8/12/16, metal and soft seated
	Chemicals	10-20 bar	10-50°C	Low	High	Bianca with PFA overmoulded disc and PTFE liner
Pipeline systems						
	Crude oil	50-100 bar	20-50°C	Low	High	Gate and ball <sup>1)</sup> valves with Trim 5/8/12/16, metal and soft seated (API 6D)
	Natural gas	25-100 bar	0-40°C	Low	High	Gate and ball <sup>1)</sup> valves with Trim 5/8/12/16, metal and soft seated (API 6D)
	Refined products	10-50 bar	10-40°C	Low	Moderate	Desponia® with stainless steel disc and NBR or FPM liner, Elara with stainless steel body-disc and MPTFE seat for higher pressure
Storage facilities						
	Crude oil	1-5 bar	Ambient	Low	High	Desponia® (plus) with stainless steel disc and NBR or FPM liner
	Natural gas	100-200 bar	Ambient	Low	High	Gate and ball <sup>1)</sup> valves with Trim 16, RPTFE or metal seated
	Liquefied natural gas	Ambient	-162°C	Low	High	Stainless steel ball valves with PTFE or TFM seat
	Refined products	1-5 bar	Ambient	Low	Moderate	Desponia® with stainless steel disc and NBR or FPM liner
Processing plants						
	Crude oil	1-10 bar	30-60°C	Low	High	Desponia® with stainless steel disc and NBR or FPM liner
	Natural gas	25-100 bar	Ambient	Low	High	Gate and ball <sup>1)</sup> valves with Trim 16, RPTFE or metal seated
	Hydrocarbon liquids	1-20 bar	20-200°C	Low	Moderate	Desponia® with stainless steel disc and NBR or FPM liner, Elara with stainless steel body-disc and MPTFE seat for higher temp. and press.
	Hydrocarbon gases	1-20 bar	-10-30°C	Low	Moderate	Desponia® with stainless steel disc and NBR or FPM liner, Elara with stainless steel body-disc and MPTFE seat for higher pressure
Compressor/pump stations						
	Crude oil / refined products	50-150 bar	10-60°C	Low	High	Globe, gate, check, ball <sup>1)</sup> valves and triple offset butterfly valve with Trim 5/8/12/16, metal and soft seated
	Natural gas	70-200 bar	5-40°C	Low	High	Ball and check <sup>1)</sup> valves with Trim 5/8/12/16, metal and soft seated
Distillation columns						
	Crude oil feed	1-0.01 barA	350-400°C	Low	High	Globe, gate, check, ball <sup>1)</sup> valves and triple offset butterfly valve with Trim 5/8/12/16, metal and soft seated
	Light distillates	Ambient	40-180°C	Low	Moderate	Globe, gate, check, ball <sup>1)</sup> valves and triple offset butterfly valve with Trim 5/8/12/16, metal and soft seated
	Middle distillates	Ambient	180-300°C	Low	Moderate	Globe, gate, check, ball <sup>1)</sup> valves and triple offset butterfly valve with Trim 5/8/12/16, metal and soft seated
	Heavy ends	1-0.01 barA	250-350°C	Low	High	Globe, gate, check, ball <sup>1)</sup> valves and triple offset butterfly valve with Trim 5/8/12/16, metal and soft seated
Cracking units						
	Oil & gas in thermal cracking	Ambient	450-750°C	Low	High	Globe, gate, check, ball <sup>1)</sup> valves and triple offset butterfly valve with Trim 5/8/12/16, metal and soft seated
	Oil & gas in catalytic cracking	2-20 bar	300-500°C	Low	High	Globe, gate, check, ball <sup>1)</sup> valves and triple offset butterfly valve with Trim 5/8/12/16, metal and soft seated
	Oil & gas in Hydrocracking	100-200 bar	250-350°C	Low	High	Globe, gate, check, ball <sup>1)</sup> valves and triple offset butterfly valve with Trim 5/8/12/16, metal and soft seated
Blending systems						
	Base fuels	Ambient	Ambient	Low	Low	Different valve types depending on media and corrosivity
	Additives	Ambient	Ambient	Low	Low	Different valve types depending on media and corrosivity
Storage tanks						
	Oil and refined products	Ambient	Ambient	Low	High	Desponia® with stainless steel disc and NBR or FPM liner
	Liquefied gases	1-15 bar	Ambient	Low	Moderate	Desponia® with stainless steel disc and NBR or FPM liner
	High-pressure liquids and gases	10-20 bar	-40-25°C	Low	Moderate	Desponia® with stainless steel disc and NBR or FPM liner, Elara with stainless steel body and MPTFE seat depending on temp. and press.
Utility lines						
	Steam lines	5-40 bar	150-400°C	Low	Moderate	Elara with stainless steel body-disc and metal seat or stainless steel triple offset butterfly valve
	Water lines	3-10 bar	20-90°C	Low	Moderate	Desponia® with stainless steel disc and EPDM liner
	Air lines	6-10 bar	Ambient	Low	Low	Desponia® with stainless steel disc and NBR liner
	Fuel gas lines	5-25 bar	Ambient	Low	Moderate	Desponia® with stainless steel disc and NBR or FPM liner, stainless steel ball valves for small pipe sizes, Elara with stainless steel body-disc and MPTFE seat for higher pressure

## Other products



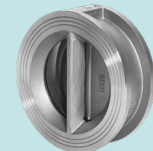
### Ball valves

2 and 3 way valves in different materials, and different actuators.



### Rhea

Swing check valve, DN 32-600, available in various executions.



### Neptunia

Dual plate check valve, DN 50–600, Ductile iron, Stainless steel, Duplex and Super Duplex.



### Actuators

Depending on the specific requirements, InterApp valves can be operated manually or automatically by pneumatic, electric or hydraulic actuators.

1) Globe, gate, check and ball valves are produced by INDOIL d.o.o., Zagreb – Croatia. Please contact INDOIL directly for these products.

# Globally local

6

As an international company with extensive product and project expertise, we support you with our sales partners and our technical support team in all parts of the world.

We are there for you.  
Anywhere, anytime.

## Facts & Figures

- / 1969 founded in Switzerland
- / 3 manufacturing sites in Switzerland, Spain and China
- / Over 20 sales and distribution companies and export sales partners
- / A dedicated member of the AVK Group since 2010



- *InterApp Subsidiaries*
- *AVK Industrial Companies*
- *Export Sales Partners*

7

*InterApp AG reserves the right to change or remove products or services from its range at any time and without prior notification or obligation. InterApp AG does not assume any liability for consequences resulting from the use of this document. There is no guarantee that the information provided here is complete, accurate or up to date.*

© 2024 InterApp AG. All rights reserved.

*The duplication of this document or a part thereof is only permitted with prior written consent from the owner of the copyrighted material.*

[info@ch.interapp.net](mailto:info@ch.interapp.net)  
[www.interapp.net](http://www.interapp.net)