

# Shut-off butterfly valves Desponia<sup>®</sup> and Desponia<sup>®</sup> plus

Desponia<sup>®</sup> and Desponia<sup>®</sup> plus –  
EN 161 certified by DVGW

EN 161 certified and approved by DVGW, Desponia<sup>®</sup> range offers a safe and reliable use for gas burners and gas applications.

EN 161 regulation establish the mandatory needs for the automatic shut-off valves for gas burners and gas appliances, for systems with working pressure up to 5 bar and valves sizes from DN 50 up to DN 250.

According to this regulation, the function and working of the safety quick-closing valves is conceived so that dangerous operating conditions are avoided, and the system is protected. If the auxiliary power source fails, the safety quick shut-off valves are closed through spring force, and the closing time is less than 1 second.

Desponia<sup>®</sup> and Desponia<sup>®</sup> plus, from DN 50 up to DN 250 and working pressure up to 5 bar, have passed the stringent requirements of the EN 161 and have obtained the approval by the DVGW, according to EN 161 Class A, valve group 2, safety Class B. Moreover, they also meet one of the most relevant fugitive emission standards, TA-Luft/VDI 2440 and can be supplied with ATEX execution.

## Components for a reliable operation

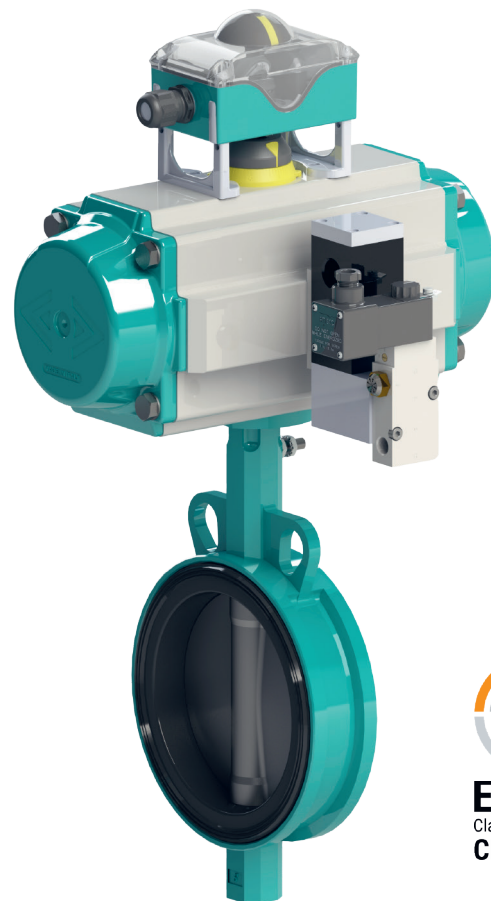
**Desponia<sup>®</sup> and Desponia<sup>®</sup> plus** - with ductile iron, cast steel or stainless steel body, stainless steel disc and NBR liner

**IA motion** - innovative rack and pinion aluminium actuator to ensure a fast release of air, for closing of the valve in less than 1 second

**Quick exhaust block** - necessary for certain assemblies to meet the required closing times

**Solenoid valves** - available in different voltages, ATEX categories and NAMUR 1 and 2 connection

**Limit switch boxes** - available in multiple materials and with various switch versions



---

### Product range

**Desponia<sup>®</sup> and Desponia<sup>®</sup> plus butterfly valves  
DN 25 – DN 250**

**Working pressure up to 5 bar**

---

### System components

- IA motion, single acting pneumatic actuator
  - Quick exhaust block
  - Solenoid valve
  - Limit switch box (optional)
  - Air filters (optional)
  - Control panel (optional)
- 

Headquartered in Switzerland and part of the AVK Group, InterApp develops, manufactures and markets valves and related accessories. As a customer-focused technology company, we supply comprehensive flow-control solutions to the most demanding industries around the world.