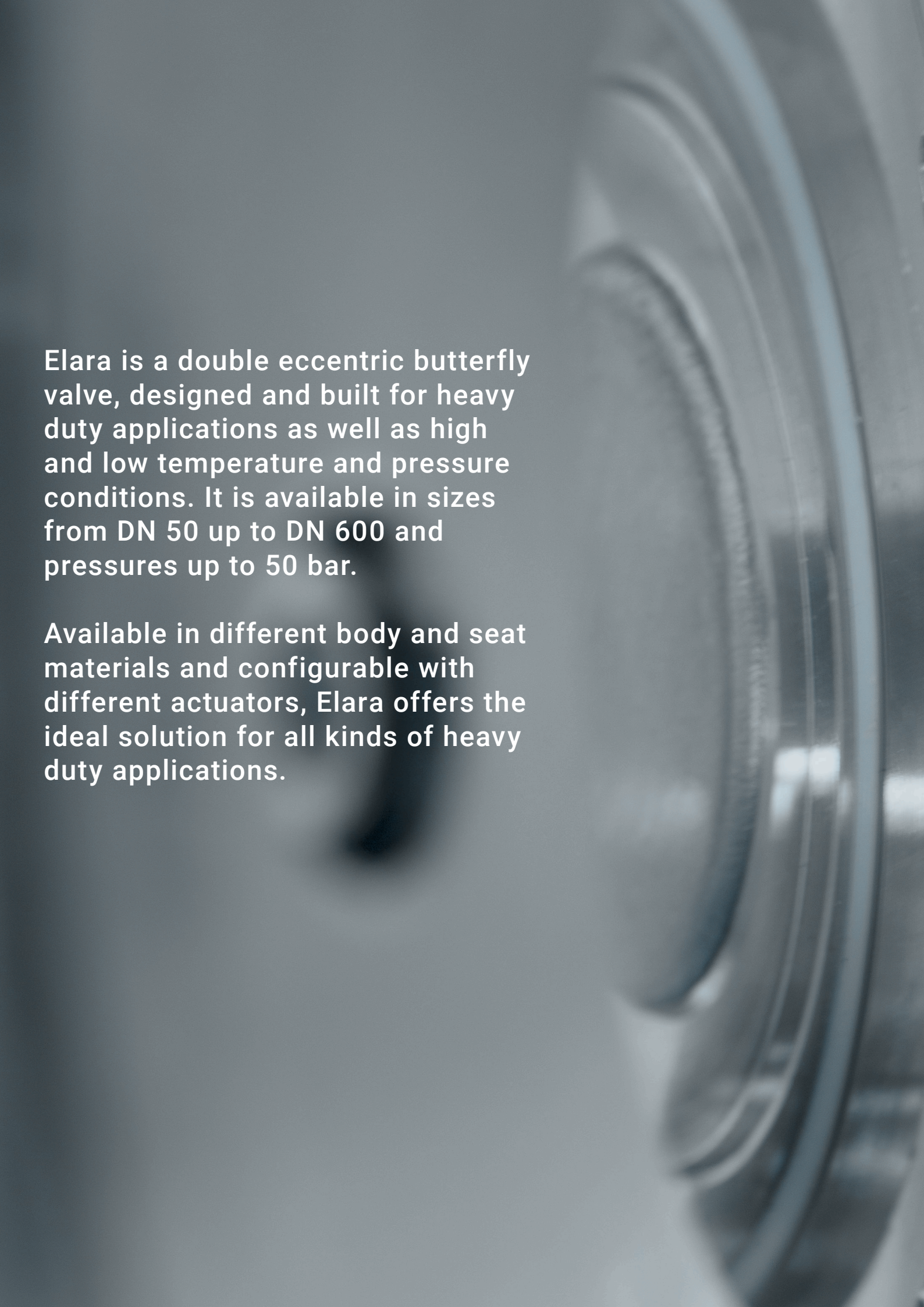


Elara – high performance valve

Double eccentric
butterfly valve

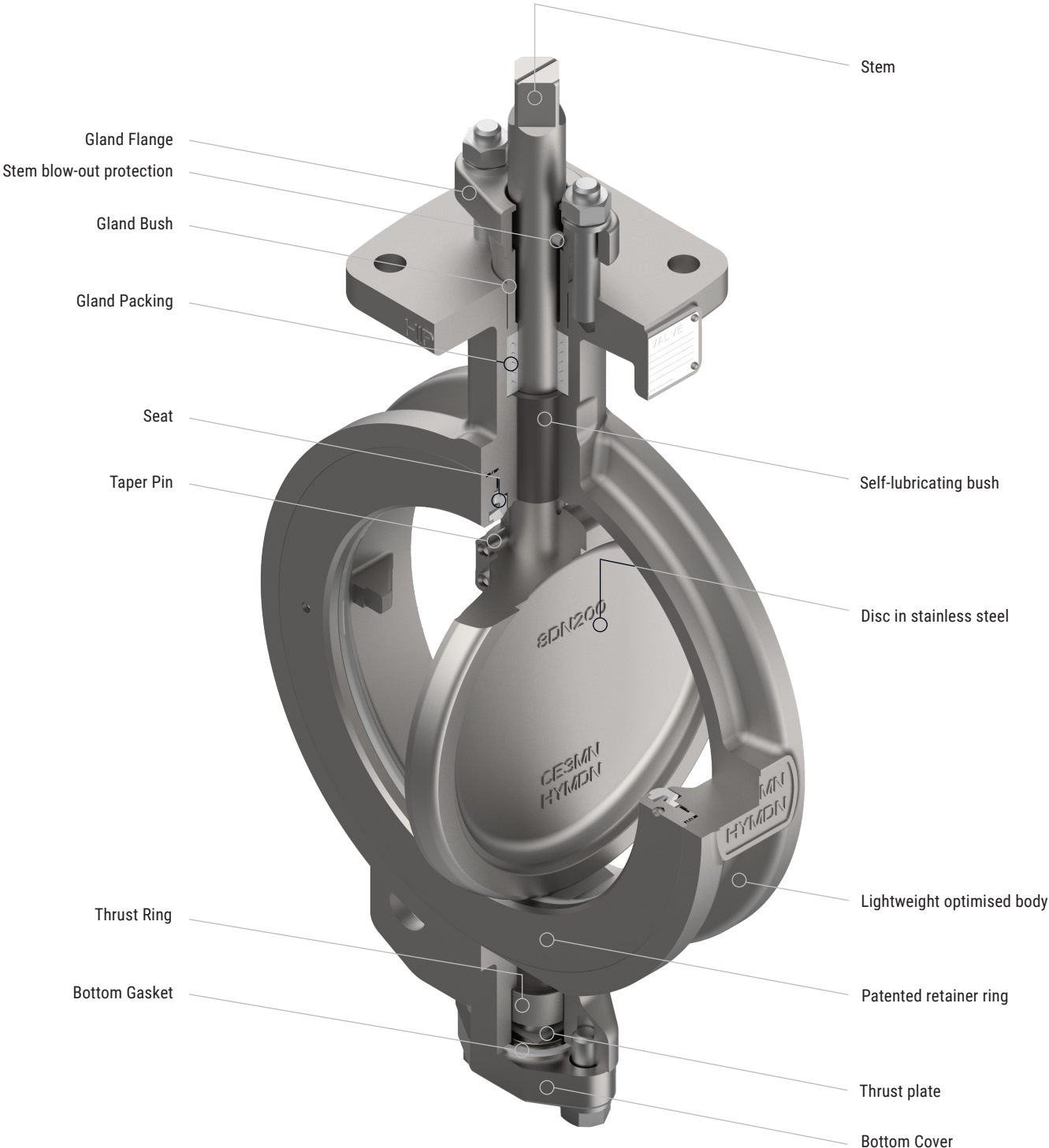


A close-up, grayscale photograph of a double eccentric butterfly valve disc. The disc is circular with a thick, raised outer rim and a central hub. The surface shows concentric rings and a textured finish. The background is dark and out of focus.

Elara is a double eccentric butterfly valve, designed and built for heavy duty applications as well as high and low temperature and pressure conditions. It is available in sizes from DN 50 up to DN 600 and pressures up to 50 bar.

Available in different body and seat materials and configurable with different actuators, Elara offers the ideal solution for all kinds of heavy duty applications.

Sturdy and long-lasting design



Elara valves are certified according to:
PED 2014/68/EU Module H,
Fire Safe according to API 607 and ISO 10497,
Gas tightness according to EN 12266-1/P12 leakage rate A and API 598 for soft seated

Elara

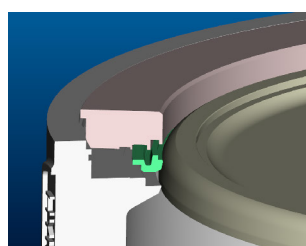
High performance double eccentric butterfly valve with interchangeable seats for heavy duty applications, suitable for any installation and process.

Body construction	Wafer, Lug
Nominal diameter	DN 50 – 600 (2" – 24")
Max. working pressure	Up to 50 bar
Flange connection	PN10, PN16, PN25, PN40, PN50, ANSI: CI 150, CI 300
Temperature range	-50°C* to 400°C
Body material	Carbon steel, Stainless steel
Shaft material	Stainless steel
Disc material	Stainless steel
Seat material	MPTFE, Metal, Fire safe
Special executions	Grease free, ATEX certified according to directive ATEX 2014/34/EU, Fugitive emission according to ISO 15848-1, DIN3780, MSS-SP-143

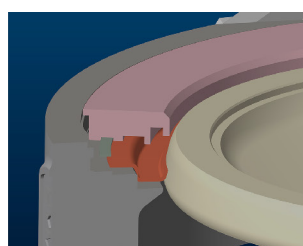
* A low temperature and cryogenic version is available on request.

Replaceable seat

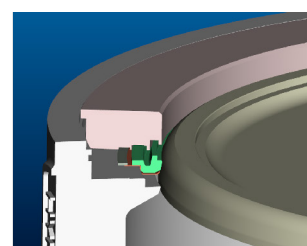
Elara is available with different seats, which can be interchanged easily, allowing the change of the seat even on site to attend urgent requests.



MPTFE



Metal

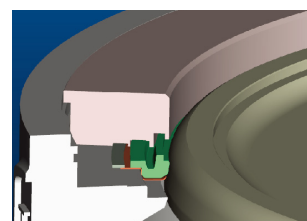


Fire safe

Fire Safe

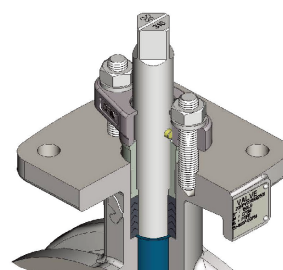
According to API 607 / ISO 10497

- Under normal working conditions, the tightness is done by the MPTFE seat ring.
- In case of fire, the MPTFE seat ring is destroyed and the tightness is ensured by the metal seat ring.



Gland Packing System

- Fully adjustable two-piece gland with spherical mating surfaces to ensure an even packing load over 360°.
- The long gland bush ensures that the gland flange remains centered while adjusting the packing gland, preventing issues like rubbing or jamming with the stem.
- Low Fugitive Emission compliant with ISO 15848-1, DIN3780 and MSS-SP-143 on request.



Designed and built for heavy-duty applications



Power Generation

The high-performance valve Elara convinces with zero maintenance and outstanding mechanical features. It is suitable for steam, overheated water, heat transfer fluids and oils or hot gases.



Life Science

Designed for steam, overheated water, Elara butterfly valves are suited for a large range of food and beverage applications as well as the sugar industry.



Oil & Gas

Elara provides high reliability and flow rates with zero maintenance during the entire lifetime. It is used to control a variety of media in the oil and gas industry such as fuels, additives, steam, mineral oils or bitumen.



Marine

Elara butterfly valves are designed and manufactured to meet the highest requirements of the marine industry. It is suitable for many marine and off-shore applications. They convince with minimum maintenance and a outstanding resistance to corrosive environments.



Chemical Process

Designed for high-performance applications, Elara meets the requirements of the most demanding applications, such as steam, low pressure steam, overheated water, hot gases or slightly aggressive fluids.



District Cooling and Heating

Elara offers high reliability and easy maintenance in high-performance applications such as overheated water, steam and low pressure steam.

Globally local. InterApp develops, manufactures and markets valves and valve systems. As a customer-focused technology company, we supply comprehensive flow control solutions for the most demanding industries around the world.

