

# B11 - Flanged heavy duty ball valve 1/2-6"

## Description

Ball valve PN 16/40 with flanged ends and two-piece body, full bore. Mounting flange for actuators according to ISO 5211. Antistatic and fire safe execution.

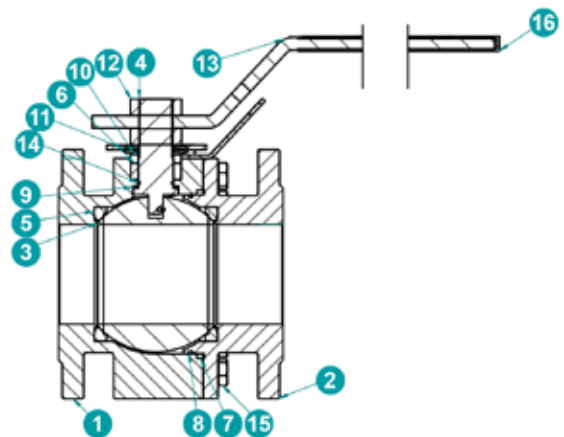
## Product features

- Flange connection 1/2 - 2" flanges PN10/16/25/40  
2 1/2 - 6" flanges PN10/16
  - Face to face dimension 1/2 - 4" DIN 3202-F4 (short),  
5 - 6" DIN 3202-F5  
Different F2F length available upon request.
  - Design According to API 6D-1745
  - Testing According to EN-12266
  - Max. working pressure 580 psi
  - Temperature range -58°F ÷ 392°F, versions for lower temperatures on request
  - Fire Safe execution According to BS 6755-2 and ISO 10497
  - Fugitive emission According to ISO 15848-1
- CE**
- The ball valves B11 meet the safety requirements of the Pressure Equipments Directive 2014/68/EU (PED) appendix 1 for fluids of the groups 1 and 2.
- ATEX Certified according to ATEX 2014/34/EU

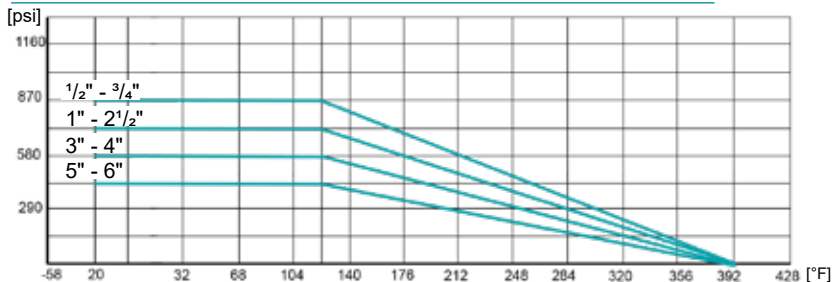


## Construction

1	Two-piece body	AISI 316 / A105N
2	Bonnet	AISI 316 / A105N
3	Ball	AISI 316L
4	Stem	AISI 316L
5	Ball seat	PTFE
6	Steam seal	PTFE
7	Body seal	PTFE
8	O-ring	FVMQ
9	Washer	PTFE
10	Gland ring	AISI 316
11	Conical spring washer	AISI 316
12	Nut	AISI 316
13	Handle	AISI 316
14	O-ring	FVMQ
15	Bolt DIN 933	A4-70
16	Handle cover	PVC



## Pressure / temperature diagram



For temperatures > 212°F a mounting bracket with adapter is mounted between ball valve and actuator.

# B11 - Flanged heavy duty ball valve 1/2-6"

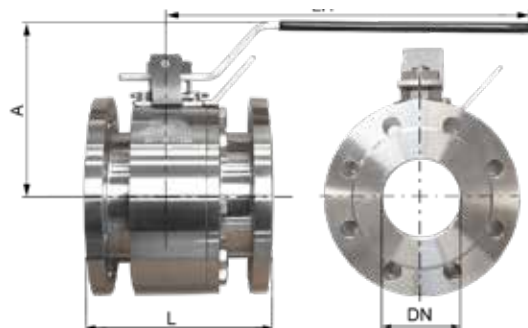
## Type code

<b>B11</b>	<b>22</b>	<b>F</b>	<b>K</b>	<b>. 025</b>	<b>. SS</b>	<b>T</b>	<b>-</b>	<b>..</b>
<b>1</b>	<b>2</b>	<b>3</b>	<b>4</b>	<b>5</b>	<b>6</b>	<b>7</b>	<b>8</b>	

<b>1 Type</b>	<b>B11</b>	Ball valve flanged type with ISO top flange	
<b>2 Construction</b>	<b>22</b>	2/2 ways, two-piece body	
<b>3 Bore</b>	<b>F</b>	Full bore	
<b>4 Face to face dimension</b>	<b>K</b>	F4 (short) standard 1/2" - 4", F5 for 6"	
	<b>F</b>	Upon request	
<b>5 Size</b>	<b>015-150</b>	DN 15-150 (1/2" - 6")	
<b>6 Materials body / ball</b>	<b>C</b>	Body carbon steel	ASTM A150N
	<b>S</b>	Body stainless steel	AISI 316
	<b>S</b>	Ball stainless steel	AISI 316L
<b>7 Materials seat ring</b>	<b>T</b>	Seat ring	PTFE
<b>8 Special executions</b>	<b>+ MB</b>	Bracket + coupling	

Other materials on request.

## Dimensions



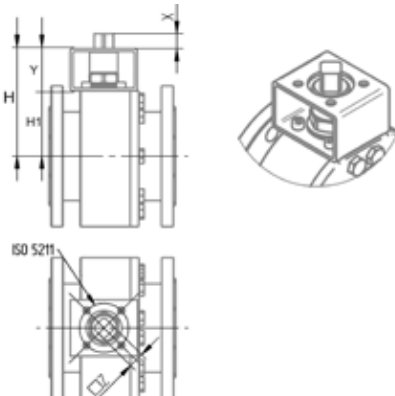
B1122FK face to face dim. DIN 3202 F4 (1/2" - 4"), F5 (6")

	Inch	L	A	LH	F	øG	ISO 5211	Torques [Nm]		[lb]
								PN16	PN40	
B1122FK.015.SST	1/2"	4.53	3.62	6.3	0.31	0.47	F03	62	70.8	8.6
B1122FK.020.SST	3/4"	4.72	4.09	6.3	0.31	0.47	F03	106.2	115.1	11.5
B1122FK.025.SST	1"	4.92	4.65	6.89	0.39	0.63	F04	168.2	185.9	14.6
B1122FK.032.SST	1 1/4"	5.12	4.8	8.27	0.39	0.63	F04	185.9	221.3	18.3
B1122FK.040.SST	1 1/2"	5.51	5	8.27	0.39	0.63	F05	336.3	380.6	24.5
B1122FK.050.SST	2"	5.91	6.14	10.83	0.55	0.87	F05	433.7	486.8	32.0
B1122FK.065.SST	2 1/2"	6.69	6.5	10.83	0.55	0.87	F07	796.6	849.7	52.2
B1122FK.080.SST	3"	7.09	7.48	14.57	0.75	1.06	F07	973.6	1062.1	61.3
B1122FK.100.SST	4"	7.48	7.87	14.57	0.75	1.06	F10	1451.5	1681.6	68.3
B1122FK.150.SST	6"	13.78	11.3	27.56	1.18	1.65	F12	3584.5	-	240.3



B1122FK with ISO 5211 bracket

	DN	X <sub>min</sub>	Y	H1	H	øZ	ISO 5211
B1122FK.015.SST	1/2"	0.63	1.57	1.38	2.95	0.35x0.35	F03
B1122FK.020.SST	3/4"	0.63	1.57	1.61	3.19	0.35x0.35	F03
B1122FK.025.SST	1"	0.63	2.36	1.97	4.33	0.43x0.43	F04
B1122FK.032.SST	1 1/4"	0.63	2.36	2.32	4.69	0.43x0.43	F04
B1122FK.040.SST	1 1/2"	0.63	2.36	2.4	4.76	0.55x0.55	F05
B1122FK.050.SST	2"	0.63	2.36	2.83	5.2	0.55x0.55	F05
B1122FK.065.SST	2 1/2"	0.75	2.36	3.39	5.75	0.67x0.67	F07
B1122FK.080.SST	3"	0.75	2.36	3.66	6.02	0.67x0.67	F07
B1122FK.100.SST	4"	0.75	2.36	4.13	6.5	0.67x0.67	F07
B1122FK.150.SST	6"	1.14	3.15	6.22	9.37	1.06x1.06	F12



The technical data are noncommittal and do not assure you of any properties. Please refer to our general sales conditions. Modifications without notice.

© 2025 InterApp AG, all rights reserved