

# PTFE-lined valves

Valves for corrosive  
and toxic applications



Valves for corrosive  
and toxic applications

Aggressive acids and alkalis pose a challenge to many processes. It is all the more important to be able to rely on safe, proven and reliable products.

Butterfly valves, ball valves and check valves from InterApp guarantee economical and safe operation over the entire service life.



# PTFE Lined Butterfly Valves

## Bianca

PTFE lined centric butterfly valve for corrosive fluids and high-purity applications.

Body construction	Wafer, Lug, U-Section
Nominal diameter	DN 32–900
Max. working pressure	Up to 16 bar
Flange connection	PN10, PN16, ANSI cl. 150, AS 2129 Table D & E and others
Temperature range	–20°C up to 200°C
Body material	Ductile iron, stainless steel
Disc-shaft (one piece) material	Stainless steel PFA overmoulded, Stainless steel PFA antistatic overmoulded, Stainless steel, Stainless steel polished Ra <0.8, Stainless steel polished Ra <0.4 and Fe <1% , Super Duplex, Super Duplex polished Ra <0.8, Hastelloy, Hastelloy polished Ra <0.8
Liner material	PTFE, PTFE antistatic, Ultraflon®, Ultralene™, Fluoropolymer according to FDA 177.1550 and EU no. 10/2011
Special execution	High-purity, oxygen service, LABS-free and for explosive atmospheres



## Extremely safe and reliable

The Bianca butterfly valve offers consistent reliability and convinces with its superior technical features.

# 1

### Reliability

The high liner collar, the PFA disc overmoulding on the shaft and the life-preloaded safety shaft sealing guarantee excellent shaft sealing.

# 2

### Total diffusion resistance

The PFA disc encapsulation and advanced liner material of at least 3 mm facilitate a total diffusion resistance.

# 3

### Entire corrosion resistance

One piece disc/shaft ensures an entire corrosion resistance as well as a blow-out proof shaft and excellent Kv values.

# 4

### Tightness

The spherically machined liner in the pole area improves life-time and tightness at the pole region. It is available in PTFE, PTFE antistatic, Ultraflon® and Ultralene™.

# 5

### Increased service life

The chambered liner prevents cold flow at the flange sealing surface.

# 6

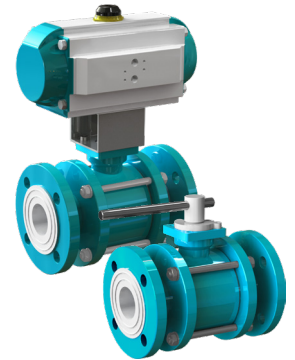
### Product variety

The Bianca butterfly valve from DN 32 up to 900 can be configured for a wide range of applications.

## PFA-Lined Ball Valves

2-way full bore PFA-lined ball valves with flanged ends for corrosive applications.

Body construction	3-piece body
Connections	Flanged ends
Nominal diameter	DN 15 –100
Max. working pressure	up to 16 bar
Max. working temperature	–50°C up to 180° C
Flange connection	PN10, PN16, ANSI cl. 150
Face to face dimension	DIN3202-F1/EN556-1, ANSI B16.10
Top flange	According to ISO 5211
Body material	Carbon steel, epoxy coated with PFA and PFA antistatic body lining
Seat ring material	PTFE, PTFE antistatic
Ball material	DN 15 - 20: PTFE + 25 % GF / PTFE antistatic DN 25 - 100: PFA / PFA antistatic with steel reinforcement, ceramic
Special execution	Cavity filler seats (very low dead volume)



### Types of ball valves

#### TLBVA23

3-piece body, ISO top flange

#### TLBVA23A

3-piece body, ISO top flange

ANSI cl. 150

## Pneumatic Actuators

### IA motion

Type	Pneumatic actuator
Function	Double and single acting
Nominal torque	15–10007 Nm (double acting at 6 bar air supply)
Supply pressure	3–8 bar (IA1000D 3–7 bar)
Temperature range	–40°C up to 80°C



InterApp offers various accessories for actuators, such as solenoid valves for pneumatic actuators, position indicators (limit switches open mounted and limit switch boxes), analog and digital positioners, air flow regulators and silencers.

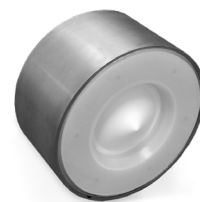
## Wafer Poppet Check Valve

---

### WPCV

Wafer poppet check valve with guided spring and poppet for a wide range of process applications.

Nominal diameter	DN 15-100
Max. working pressure	Up to 16 bar
Flange connection	PN10, PN16, ANSI cl. 150
Max. working temperature	-20°C up to 200°C
Body material	Carbon steel, Stainless steel
Poppet material	PTFE
Seal material	PFA
Special executions	Alternative pressure ratings, PTFE encapsulated, alternative spring materials, without spring (floating poppet)



## Flanged Poppet Check Valve

---

### FPCV

Flanged poppet check valve with flanged ends for use in the most demanding corrosive and toxic applications.

Nominal diameter	DN 15-100
Max. working pressure	Up to 16 bar
Flange connection	PN10, PN16, ANSI cl. 150
Max. working temperature	-20°C up to 200°C
Body material	Carbon steel, Stainless steel
Poppet material	PTFE
Seal material	PFA, PFA conductive
Special executions	Alternative pressure ratings, PTFE encapsulated, alternative spring materials, without spring (floating poppet)



## Swing Check Valve

---

### STCV

Swing check valve with fully encapsulated one piece disc/hinge assembly for a wide range of chemical process applications.

Nominal diameter	DN 100-300
Max. working pressure	Up to 16 bar
Flange connection	ANSI cl. 150
Max. working temperature	-20°C up to 200°C
Body material	Cast steel
Disc material	Cast steel
Seal material	PFA
Special execution	Antistatic liner, soft seats Kalrez® & Viton® for gas applications



## Ball Check Valve

---

### TLBCV

Full bore ball check valve with flanged ends and 3-piece body for corrosive applications.

Nominal diameter	DN 15-100
Max. working pressure	Up to 16 bar
Flange connection	PN10, PN16
Max. working temperature	-50 °C up to 180°C
Body material	Carbon steel, Stainless steel
Ball material	PTFE, PTFE antistatic, PTFE GF reinforced, ceramic
Seal material	PFA
Special execution	Antistatic, cavity filter seats (very low dead volume)



**Globally local.** As a global production and distribution company, we offer the advantage of a comprehensive portfolio of products and solutions. Thanks to our local presence we are also the ideal consultant as we are familiar with your needs in every project phase and support you with efficient planning services.



**InterApp AG**

Grundstrasse 24  
6343 Rotkreuz  
Tel. +41 41 798 22 33

[info@ch.interapp.net](mailto:info@ch.interapp.net)  
[www.interapp.net](http://www.interapp.net)