

PTFE-lined valves

Valves for corrosive
and toxic applications



Valves for corrosive
and toxic applications

Aggressive acids and alkalis pose a challenge to many processes. It is all the more important to be able to rely on safe, proven and reliable products.

Butterfly valves, ball valves and check valves from InterApp guarantee economical and safe operation over the entire service life.

PTFE Lined Butterfly Valves

Bianca

PTFE lined centric butterfly valve for corrosive fluids and high-purity applications.

| | |
|---------------------------------|--|
| Body construction | Wafer, Lug, U-Section |
| Nominal diameter | 1¼"–36" |
| Max. working pressure | Up to 323 psi |
| Flange connection | PN10, PN16, ANSI cl. 150, AS 2129 Table D & E and others |
| Temperature range | -4 °F up to 392 °F |
| Body material | Ductile iron, stainless steel |
| Disc-shaft (one piece) material | Stainless steel PFA overmoulded, Stainless steel PFA antistatic overmoulded, Stainless steel, Stainless steel polished Ra <0.8, Stainless steel polished Ra <0.4 and Fe <1% , Super Duplex, Super Duplex polished Ra <0.8, Hastelloy, Hastelloy polished Ra <0.8 |
| Liner material | PTFE, PTFE antistatic, Ultraflon®, Ultralene™, Fluoropolymer according to FDA 177.1550 and EU no. 10/2011 |
| Special execution | High-purity, oxygen service, LABS-free and for explosive atmospheres |



Extremely safe and reliable

The Bianca butterfly valve offers consistent reliability and convinces with its superior technical features.

1

Reliability

The high liner collar, the PFA disc overmoulding on the shaft and the life-preloaded safety shaft sealing guarantee excellent shaft sealing.

4

Tightness

The spherically machined liner in the pole area improves life-time and tightness at the pole region. It is available in PTFE, PTFE antistatic, Ultraflon® and Ultralene™.

2

Total diffusion resistance

The PFA disc encapsulation and advanced liner material of at least 3 mm facilitate a total diffusion resistance.

5

Increased service life

The chambered liner prevents cold flow at the flange sealing surface.

3

Entire corrosion resistance

One piece disc/shaft ensures an entire corrosion resistance as well as a blow-out proof shaft and excellent Cv values.

6

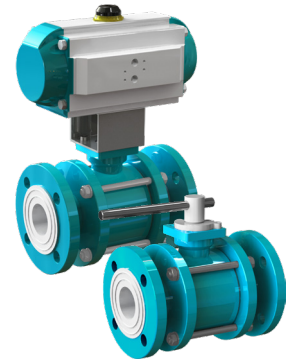
Product variety

The Bianca butterfly valve from 1¼" up to 36" can be configured for a wide range of applications.

PFA-Lined Ball Valves

2-way full bore PFA-lined ball valves with flanged ends for corrosive applications.

| | |
|--------------------------|--|
| Body construction | 3-piece body |
| Connections | Flanged ends |
| Nominal diameter | ½" – 4" |
| Max. working pressure | up to 232 psi |
| Max. working temperature | -58°F up to 356 °F |
| Flange connection | PN10, PN16, ANSI cl. 150 |
| Face to face dimension | DIN3202-F1/EN556-1, ANSI B16.10 |
| Top flange | According to ISO 5211 |
| Body material | Carbon steel, epoxy coated with PFA and PFA antistatic body lining |
| Seat ring material | PTFE, PTFE antistatic |
| Ball material | ½" - ¾": PTFE + 25 % GF / PTFE antistatic 1" - 4": PFA / PFA antistatic with steel reinforcement, ceramic |
| Special execution | Cavity filler seats (very low dead volume) |



Types of ball valves

TLBVA23

3-piece body, ISO top flange

TLBVA23A

3-piece body, ISO top flange

ANSI cl. 150

Pneumatic Actuators

IA motion

| | |
|-------------------|--|
| Type | Pneumatic actuator |
| Function | Double and single acting |
| Nominal torque | 15–10007 Nm (double acting at 87 psi air supply) |
| Supply pressure | 14.5–116 psi (IA1000D 43.5–101.5 psi) |
| Temperature range | –40°F up to 176°F |



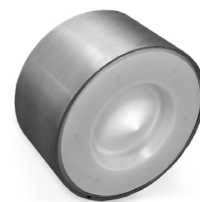
InterApp offers various accessories for actuators, such as solenoid valves for pneumatic actuators, position indicators (limit switches open mounted and limit switch boxes), analog and digital positioners, air flow regulators and silencers.

Wafer Poppet Check Valve

WPCV

Wafer poppet check valve with guided spring and poppet for a wide range of process applications.

| | |
|--------------------------|---|
| Nominal diameter | ½" –4" |
| Max. working pressure | Up to 232 psi |
| Flange connection | PN10, PN16, ANSI cl. 150 |
| Max. working temperature | -4°F up to 392°F |
| Body material | Carbon steel, Stainless steel |
| Poppet material | PTFE |
| Seal material | PFA |
| Special executions | Alternative pressure ratings, PTFE encapsulated, alternative spring materials, without spring (floating poppet) |

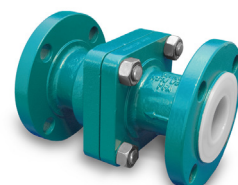


Flanged Poppet Check Valve

FPCV

Flanged poppet check valve with flanged ends for use in the most demanding corrosive and toxic applications.

| | |
|--------------------------|---|
| Nominal diameter | ½" –4" |
| Max. working pressure | Up to 232 psi |
| Flange connection | PN10, PN16, ANSI cl. 150 |
| Max. working temperature | -4°F up to 392°F |
| Body material | Carbon steel, Stainless steel |
| Poppet material | PTFE |
| Seal material | PFA, PFA conductive |
| Special executions | Alternative pressure ratings, PTFE encapsulated, alternative spring materials, without spring (floating poppet) |



Swing Check Valve

STCV

Swing check valve with fully encapsulated one piece disc/hinge assembly for a wide range of chemical process applications.

| | |
|--------------------------|--|
| Nominal diameter | 4" –12" |
| Max. working pressure | Up to 232 psi |
| Flange connection | ANSI cl. 150 |
| Max. working temperature | -4°F up to 392°F |
| Body material | Cast steel |
| Disc material | Cast steel |
| Seal material | PFA |
| Special execution | Antistatic liner, soft seats Kalrez® & Viton® for gas applications |



Ball Check Valve

TLBCV

Full bore ball check valve with flanged ends and 3-piece body for corrosive applications.

| | |
|--------------------------|--|
| Nominal diameter | ½" –4" |
| Max. working pressure | Up to 232 psi |
| Flange connection | PN10, PN16 |
| Max. working temperature | -58°F up to 292°F |
| Body material | Carbon steel, Stainless steel |
| Ball material | PTFE, PTFE antistatic, PTFE GF reinforced, ceramic |
| Seal material | PFA |
| Special execution | Antistatic, cavity filter seats (very low dead volume) |



We are there for you. With our global expertise in industrial applications, we understand your requirements and offer expert advice at every stage of your project. At the same time, you can benefit from our international product standards thanks to our global know-how. Our highly skilled technical team, coupled with the quality and durability of our products, makes us a reliable partner for industrial valve solutions.