

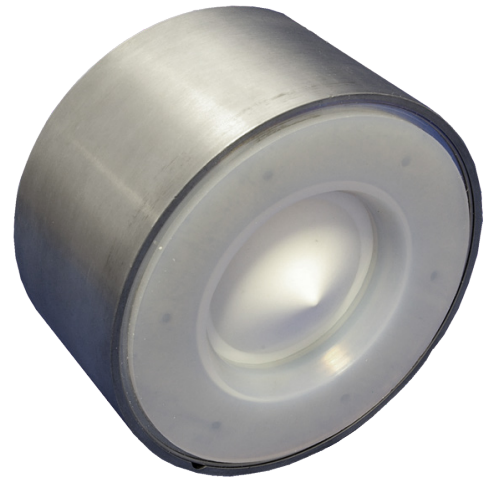
WPCV - Wafer Poppet Check Valve

Description

The WPCV check valve has a spring assisted poppet and a robust design, suitable for a wide range of process applications. PFA, glass filled PTFE & Hastelloy to all wetted parts ensures long, high cycle performance. The product is available for both standard DIN PN 10/16 and ANSI 150.

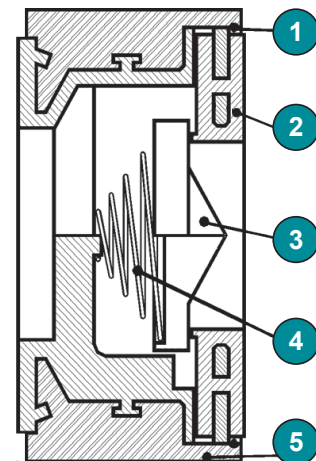
Product features

- Guided spring and poppet - secure from misalignment
- Crush resistant design guards against installation abuse
- Ideal design for low pressure duties
- Full bore design provides maximum flow with minimum pressure drop
- Hastelloy C276 spring as standard, poppet lift pressure 14 mbar, other materials under request
- Designed for easy disassembly

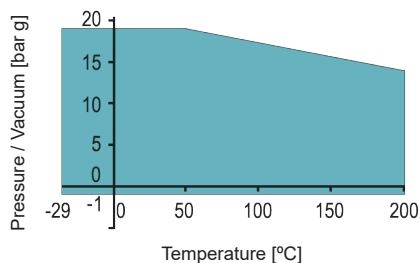


Material specification

Item	Qty	Description	Materials	Specification	DIN equivalent material
1	1	Circlip	Stainless steel	BS2056 Gr 316S42	1.4401
2	1	Seat plate	Stainless steel / PFA	ASTM A240 Gr 304 / PFA	1.4301 / PFA
3	1	Poppet	Glass filled PTFE	BS6564 UA1/1	-
4	1	Spring	Hastelloy C276	ASTM B574 Gr UNS N10276	2.4819
5	1	Valve body	Stainless steel / PFA	BS970 Gr.316S31 / PFA	1.4401 / PFA
		PFA lining		ASTM D3307	



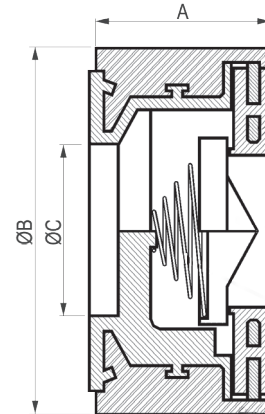
Pressure- / temperature diagram



WPCV - Wafer Poppet Check Valve

Dimensions

Nominal size		Face to face	Diameter ANSI 150	Diameter DIN PN 10/16	Valve bore	Weight ANSI 150	Weight DIN PN 10/16
mm	Inches	A	B	B	C	kg	kg
15	½	30	45	51	16	0.2	0.2
25	1	35	63	73	25	0.5	0.6
40	1½	45	82	92	36	1.1	1.3
50	2	56	101	107	50	1.7	1.8
80	3	71	133	142	66	3.5	3.5
100	4	80	171	162	88	5.3	5.1



Options

Component	Description
Body	316 stainless steel
Lining	PFA antistatic
Spring	Alternative pressure ratings
	PTFE encapsulated
	Alternative spring materials
	Without spring (floating poppet)

Type code

WPCV	080	.	3	3	-	4KT	.	0TG	.	S
①	②		③	④		⑤		⑥		⑦

①	Type	WPCV	Wafer Poppet Check Valve
②	Nominal diameter	015 - 100	mm
③	Working pressure	3	16 bar
④	Rating	3	PN 10/16
		A	ASTM Class 150
			Others on request
⑤	Body	4KT	Stainless steel / PFA
⑥	Poppet	0TG	Glass filled PTFE
⑦	Spring		without spring (floating poppet)
		S	Hastelloy C276